



# **ECONOMIC INDICATORS**

NEW SOUTH WALES

EMBARGO: 11:30AM (CANBERRA TIME) WED 14 OCTOBER 1998

## **C O N T E N T S**

	<i>page</i>
Notes . . . . .	2
NSW Overview . . . . .	3
Main features . . . . .	4
List of tables and graphs . . . . .	5
Population . . . . .	6
Labour . . . . .	7
Production . . . . .	10
Building . . . . .	11
Retail trade . . . . .	12
New motor vehicle registrations . . . . .	13
Tourism . . . . .	14
Consumer and producer price indexes . . . . .	15
Finance . . . . .	16
State Government finance . . . . .	17
Investment . . . . .	18
Foreign trade . . . . .	19

- For more information about these and related statistics, contact Bill Markham on (02) 9268 4376 or e-mail [bill.markham@abs.gov.au](mailto:bill.markham@abs.gov.au) or refer to the back cover of this publication.

## NOTES

**GENERAL** This publication provides information on a wide range of economic indicators which are the latest available at the time of publication. In a number of cases, figures appearing in this summary are preliminary and are subject to revision in subsequent issues.

**CHANGES IN THIS ISSUE** For table 1, data for the Estimated Resident Population, which was replaced in the September 1998 issue by latest financial year information, has been reinstated.

**SEASONAL ADJUSTMENT AND TREND ESTIMATION** Seasonal adjustment is a means of removing the estimated effects of normal seasonal variation from a series so that the effects of other variations on that series can be more clearly recognised. Seasonal adjustment does not aim to remove the irregular or non-seasonal influences which may be present. This means that movements of seasonally adjusted estimates may not be reliable indicators of trend behaviour. Smoothing seasonally adjusted series produces a measure of the underlying trend by reducing the impact of the irregular component of the series. This smoothing technique does result in revisions to the most recent estimates as additional observations become available. For an explanation of seasonal adjustment derivation, refer to the publication *Seasonally Adjusted Indicators* (Cat. no. 1308.0).

**STANDARD ERRORS OF ESTIMATES** One measure of the variability which occurs as a result of surveying only samples of the total business population is the standard error. There are about two chances in three that a survey estimate is within one standard error of the figure that would have been obtained if all businesses had been included, and about 19 chances in 20 that it is within two standard errors. The standard error can also be expressed as a percentage of the estimate and this is known as the relative standard error (RSE). For detailed explanatory notes and definitions for the items shown in this publication, readers are referred to the specific ABS publications.

Current publications produced by the ABS are listed in the *Catalogue of Publications* (Cat. no. 1101.0). A *Release Advice* (Cat. no. 1105.0) is issued on Tuesdays and Fridays which lists publications to be released in the next few days. These publications are available from any ABS office.

.....

**SYMBOLS AND OTHER USAGES**

kWh	kilowatt hour
teraJ	terajoule
n.a.	not available
n.p.	not available for publication but included in totals where applicable
n.y.a	not yet available
r	figure or series revised since previous issue
..	not applicable
—	nil or rounded to zero
—	break in continuity of series (where a line is drawn across a column between two consecutive figures)

Gregory W. Bray  
Regional Director  
New South Wales

.....

# NSW OVERVIEW

---

## EMPLOYMENT

The number of employed persons in NSW was 2,839,200 in seasonally adjusted terms in August 1998, a fall of 1.6% on the previous month. National employment rose slightly in August.

## UNEMPLOYMENT

Unemployment in NSW rose by 0.9% in August 1998 to a seasonally adjusted figure of 235,100. The NSW unemployment rate rose marginally on the previous month to 7.6% while the national unemployment rate fell a little to 8.1%.

## BUILDING APPROVALS

The seasonally adjusted number of new dwelling units approved for NSW in July 1998 decreased by 7.9% from the previous month to 4,936.

## RETAIL

In seasonally adjusted terms, total retail sales for NSW in July 1998 was \$4,046.0 million, an increase of 2.4% compared to the previous month.

## NEW MOTOR VEHICLE REGISTRATIONS

New motor vehicle registrations for NSW in seasonally adjusted terms in July 1998 rose by 5.7% from the previous month to 25,391.

## TOURISM

Room nights occupied in licensed hotels, motels and guest houses, and serviced apartments with 15 or more rooms in NSW decreased by 4.2% in the June quarter 1998 compared with the March quarter but increased by 2.8% compared with the June quarter 1997.

## INVESTMENT

The June quarter 1998 trend estimate of total private new capital expenditure (at current prices) for NSW was \$3,424 million, a fall of 4.6 % from the previous quarter.

## FINANCE

The value of housing finance commitments for owner occupation in NSW in July 1998 was \$2,045 million. This represented a 2.6% decrease from June 1998 but an 8.9% increase from July 1997.

## MAIN FEATURES

---

### BUILDING APPROVALS

There was a fall of 2.5% to 2,467 in the seasonally adjusted number of new houses approved for NSW in the month to July 1998. However, there was an increase of 15.6% compared to July 1997. At the national level, new houses approved totalled 8,894, a decrease of 6.0% on the previous month but 11.8% up on the previous year.

The value of new residential building approved for NSW in July 1998 was \$565.5 million, down 4.0% on the previous month but 32.4% up on July 1997. Nationally, the figure was \$1,345.5 million, a decrease of 12.2% and an increase of 19.8% respectively over the same periods. Both at the State and national levels, the value of alterations and additions to residential buildings continue to show strong growth (49.3% and 22.1% respectively) compared to the figures a year ago.

In original terms, the value of all building approved for NSW in July 1998 fell by 9.1% on the previous month to \$1,104.4 million. Compared to the figure a year ago, there was a 4.5% fall. At the national level, the figure was \$2,708.3 million, showing decreases of 10.4% and 15.0% respectively over the same periods. For NSW, the value of non-residential building approved in July 1998 was \$329.8 million, the lowest value recorded in 1998.

### INVESTMENT

For total private new capital expenditure (at current prices) the June quarter 1998 trend estimate for NSW was \$3,424 million. This represented a fall of \$166 million or 4.6% from the previous quarter and contrasted with a slight increase of 0.2% for Australia over the same period.

The trend estimates for expenditure on buildings and structures for NSW fell by 9.2% to \$881 million. This expenditure has been gradually falling since the December quarter 1996 peak of \$1,105 million. The trend estimates for expenditure on equipment, plant and machinery for NSW also fell, by \$77 million (2.9%) to \$2,543 million. This is the second successive quarter of decreased expenditure, although the level of expenditure is 7.4% higher than in the June quarter 1997.

# LIST OF TABLES AND GRAPHS

Page

## POPULATION

<b>1</b>	Estimated resident population, NSW. ....	6
----------	--	---

## LABOUR

<b>2</b>	Labour data, latest time period, NSW and Australia .....	7
<b>3</b>	Labour data, time series, NSW .....	7
<b>4</b>	Labour force status of the civilian population, NSW .....	8
<b>5</b>	Graph: Unemployment rates, NSW and Australia .....	9

## PRODUCTION

<b>6</b>	Coal, electricity and gas production, latest time period, NSW and Australia ..	10
<b>7</b>	Coal, electricity and gas production, time series, NSW .....	10

## BUILDING

<b>8</b>	Building approvals, latest time period, NSW and Australia .....	11
<b>9</b>	Building approvals, time series, NSW .....	11

## RETAIL TRADE

<b>10</b>	Turnover of retail establishments, latest time period, NSW and Australia ....	12
<b>11</b>	Turnover of retail establishments, time series, NSW .....	12

## NEW MOTOR VEHICLE REGISTRATIONS

<b>12</b>	New motor vehicle registrations, latest time period, NSW and Australia .....	13
<b>13</b>	New motor vehicle registrations, time series, NSW .....	13

## TOURISM

<b>14</b>	Accommodation Establishments, latest time period, NSW and Australia. ....	14
<b>15</b>	Accommodation Establishments, time series, Sydney and NSW. ....	14
<b>16</b>	Graph: Hotels, motels etc., monthly room occupancy rates, Sydney Tourism Region and NSW. ....	14

## CONSUMER AND PRODUCER PRICE INDEXES

<b>17</b>	Consumer and producer price indexes, latest time period, NSW and Australia .....	15
<b>18</b>	Consumer and producer price indexes, time series, NSW .....	15
<b>19</b>	Graph: Consumer Price Index, Sydney and average of 8 capital cities .....	15

## HOUSING FINANCE

<b>20</b>	Finance commitments, latest time period, NSW and Australia .....	16
<b>21</b>	Finance commitments, time series, NSW .....	16

## STATE GOVERNMENT FINANCE

<b>22</b>	Government finance, budget sector, time series, NSW .....	17
-----------	---	----

## INVESTMENT

<b>23</b>	Actual private new fixed capital expenditure, latest time period, NSW and Australia .....	18
<b>24</b>	Actual private new fixed capital expenditure, time series, NSW. ....	18
<b>25</b>	Graph: Actual private new fixed capital expenditure, NSW. ....	18

## FOREIGN TRADE

<b>26</b>	Imports and exports, latest time period, NSW and Australia .....	19
<b>27</b>	Imports and exports, time series, NSW .....	19

# 1

## ESTIMATED RESIDENT POPULATION, NSW

Period	Estimated resident population at end of period			Increase during period			Mean estimated resident population for year ended	
	Males	Females	Persons	Natural increase(a)	Net estimated migration	Total increase(b)	30 June	31 December
	'000	'000	'000	'000	'000	'000	'000	'000
<b>1995</b>	3 064.0	3 104.8	6 168.8	42.0	33.7	78.6	6 093.2	6 128.0
<b>1996</b>	3 098.2	3 142.6	6 240.9	40.6	29.3	72.1	6 167.2	6 204.2
<b>1997</b>	3 131.5	3 174.8	6 306.3	11.9	r1.4	13.3	6 240.9	6 276.1
<b>1996</b>								
December qtr	3 098.2	3 142.6	6 240.9	11.1	8.4	19.5	..	..
<b>1997</b>								
March qtr	3 108.6	3 152.6	6 261.3	11.4	9.0	20.4	..	..
June qtr	3 115.3	3 159.0	6 274.4	11.0	2.1	13.1	..	..
September qtr	3 124.9	3 168.1	6 293.0	7.6	11.0	18.6	..	..
December qtr	3 131.5	3 174.8	6 306.3	11.9	r1.4	13.3	..	..
<b>1998</b>								
March qtr	3 144.0	3 185.8	6 329.8	9.9	13.5	23.4	..	..

<sup>a</sup> Excess of live births over deaths.

<sup>b</sup> For dates prior to June 1996, differences between the total increase shown and the sum of the natural increase and net estimated migration arise from retrospective adjustments to population estimates (which are made after each Census) to compensate for any intercensal discrepancy. A description of intercensal discrepancy is contained in the ABS information paper Demographic Estimates: Concepts, Sources and Methods (Cat. no. 3228.0).

Source: Australian Demographic Statistics (Cat. no. 3101.0)

## 2

### LABOUR, NSW AND AUSTRALIA

Indicator	Unit	Latest period	New South Wales		Australia			
			Latest figure	Change from prior period %	Change from same period prior year %	Latest figure	Change from prior period %	Change from same period prior year %
Employed persons (seasonally adjusted)	'000	Aug 98	2 839.2	-1.6	2.3	8 611.2	0.2	2.7
Unemployed persons (seasonally adjusted)	'000	Aug 98	235.1	0.9	-2.9	761.0	-2.1	-4.6
Labour force (seasonally adjusted)	'000	Aug 98	3 074.3	-1.5	1.9	9 372.2	0.0	2.0
Participation rate (seasonally adjusted)	%	Aug 98	61.5	-1.4	0.8	63.4	0.2	0.6
Unemployment rate (seasonally adjusted)	%	Aug 98	7.6	1.3	-5.0	8.1	-2.4	-6.9
Industrial disputes—working days lost	'000	Jun 98	32.1	14.2	197.2	71.1	-26.3	139.4
Job vacancies	'000	May 98	20.5	-12.7	4.4	73.3	-3.0	26.0
Average weekly employee earnings—full-time adult ordinary time earnings (seasonally adjusted)	\$	May 98	747.2	0.4	3.4	725.6	0.6	4.3

Source: *Labour Force, Australia, Preliminary (Cat. no. 6202.0)*, *Job Vacancies and Overtime, Australia (Cat. no. 6354.0)*, *Industrial Disputes, Australia (Cat. no. 6321.0)*, *Average Weekly Earnings, States and Australia (Cat. no. 6302.0)*

## 3

### LABOUR, NSW

Period	Seasonally adjusted						
	Employed persons '000	Unemployed persons '000	Labour force '000	Participation rate %	Unemployment rate %	Industrial disputes (working days lost) '000	Job vacancies '000
<b>1997</b>							
June	2 790.4	232.6	3 023.0	61.3	7.7	10.8	..
July	2 805.7	255.4	3 061.1	62.0	8.3	18.5	..
August	2 774.4	242.2	3 016.6	61.0	8.0	22.1	19.3
September	2 815.2	240.2	3 055.5	61.7	7.9	23.0	..
October	2 787.7	244.1	3 031.7	61.2	8.1	28.0	..
November	2 831.9	238.7	3 070.6	61.9	7.8	8.1	22.8
December	2 836.6	228.0	3 064.7	61.7	7.4	4.8	..
<b>1998</b>							
January	2 843.3	227.1	3 070.4	61.8	7.4	3.3	..
February	2 805.4	234.5	3 039.9	61.1	7.7	9.3	23.5
March	2 830.3	230.7	3 061.0	61.5	7.5	19.7	..
April	2 850.4	220.5	3 070.9	61.6	7.2	8.1	..
May	2 835.4	231.9	3 067.3	61.5	7.6	28.1	20.5
June	2 864.6	234.3	3 098.9	62.1	7.6	32.1	..
July	2 886.7	232.9	3 119.6	62.4	7.5	n.y.a.	..
August	2 839.2	235.1	3 074.3	61.5	7.6	n.y.a.	n.y.a.

Source: *Labour Force, Australia, Preliminary (Cat. no. 6202.0)*, *Industrial Disputes, Australia (Cat. no. 6321.0)*

## 4

## LABOUR FORCE STATUS, NSW—ORIGINAL

Month	Employed		Unemployed		Labour force	Not in labour force	Civilian population aged 15 years and over	Unemployment rate(a)	Participation rate(b)
	Full-time workers	Total	Looking for full-time work	Total					
	'000	'000	'000	'000	'000	'000	'000	%	%
<b>MALES</b>									
<b>August</b>									
1994	1 346.4	1 519.8	141.4	153.8	1 673.6	659.4	2 333.0	9.2	71.7
1995	1 403.0	1 570.8	122.3	134.5	1 705.2	656.3	2 361.6	7.9	72.2
1996	1 402.2	1 587.5	128.7	147.8	1 735.4	660.4	2 395.8	8.5	72.4
<b>1997</b>									
June	1 416.4	1 598.9	116.8	129.1	1 728.1	692.7	2 420.7	7.5	71.4
July	1 422.3	1 600.4	130.3	145.4	1 745.8	677.8	2 423.6	8.3	72.0
August	1 390.3	1 567.6	120.3	135.2	1 702.8	723.7	2 426.5	7.9	70.2
September	1 434.3	1 613.3	126.1	147.6	1 760.9	668.5	2 429.3	8.4	72.5
October	1 428.1	1 595.3	121.3	138.9	1 734.2	698.1	2 432.3	8.0	71.3
November	1 431.3	1 615.2	119.0	138.1	1 753.3	681.9	2 435.2	7.9	72.0
December	1 456.8	1 637.6	116.8	135.1	1 772.7	665.4	2 438.1	7.6	72.7
<b>1998</b>									
January	1 441.8	1 616.3	127.1	141.7	1 758.0	682.3	2 440.3	8.1	72.0
February	1 431.8	1 599.2	129.3	150.7	1 749.9	692.5	2 442.4	8.6	71.6
March	1 432.2	1 613.1	123.5	140.6	1 753.7	690.9	2 444.6	8.0	71.7
April	1 441.4	1 622.7	104.7	122.9	1 745.6	701.8	2 447.3	7.0	71.3
May	1 434.0	1 614.6	115.7	133.2	1 747.8	702.3	2 450.1	7.6	71.3
June	1 443.0	1 623.9	117.7	134.6	1 758.5	694.4	2 452.9	7.7	71.7
July	1 463.8	1 639.4	115.6	128.2	1 767.6	687.9	2 455.5	7.3	72.0
August	1 422.9	1 597.4	116.8	136.1	1 733.5	724.5	2 458.1	7.9	70.5
<b>FEMALES</b>									
<b>August</b>									
1994	676.3	1 114.6	74.8	101.4	1 215.9	1 202.1	2 418.0	8.3	50.3
1995	708.8	1 180.7	59.8	92.2	1 272.9	1 171.8	2 444.7	7.2	52.1
1996	720.7	1 193.0	60.0	90.2	1 283.3	1 199.0	2 482.3	7.0	51.7
<b>1997</b>									
June	704.3	1 192.4	64.1	92.3	1 284.7	1 226.0	2 510.7	7.2	51.2
July	729.6	1 213.2	61.7	92.7	1 305.9	1 207.7	2 513.6	7.1	52.0
August	703.9	1 182.9	65.3	92.7	1 275.6	1 240.8	2 516.5	7.3	50.7
September	722.2	1 226.8	63.4	96.1	1 322.9	1 196.5	2 519.4	7.3	52.5
October	721.0	1 194.1	68.1	97.3	1 291.5	1 230.6	2 522.1	7.5	51.2
November	725.5	1 228.3	62.1	87.8	1 316.1	1 208.6	2 524.7	6.7	52.1
December	730.8	1 234.9	66.3	95.7	1 330.6	1 196.8	2 527.4	7.2	52.6
<b>1998</b>									
January	721.4	1 185.5	71.4	102.6	1 288.1	1 241.2	2 529.3	8.0	50.9
February	707.1	1 189.9	72.1	111.7	1 301.7	1 229.5	2 531.1	8.6	51.4
March	715.8	1 217.8	73.7	105.3	1 323.1	1 209.9	2 533.0	8.0	52.2
April	720.0	1 226.2	63.2	96.2	1 322.4	1 212.9	2 535.3	7.3	52.2
May	707.9	1 220.7	68.5	94.0	1 314.7	1 222.9	2 537.7	7.1	51.8
June	727.3	1 242.0	57.2	88.3	1 330.4	1 209.6	2 540.0	6.6	52.4
July	762.9	1 255.2	59.9	88.7	1 344.0	1 198.3	2 542.3	6.6	52.9
August	721.7	1 216.6	62.7	85.2	1 301.9	1 242.7	2 544.5	6.5	51.2

For footnotes see end of table.



# 4

## LABOUR FORCE STATUS, NSW—ORIGINAL *continued*

Month	Employed		Unemployed		Labour force	Not in labour force	Civilian population aged 15 years and over	Unemployment rate(a)	Participation rate(b)
	Full-time workers	Total	Looking for full-time work	Total					
	'000	'000	'000	'000	'000	'000	'000	%	%
PERSONS									
<b>August</b>									
1994	2 022.7	2 634.4	216.2	255.1	2 889.5	1 861.6	4 751.1	8.8	60.8
1995	2 111.8	2 751.5	182.1	226.6	2 978.1	1 828.2	4 806.3	7.6	62.0
1996	2 123.0	2 780.5	188.7	238.1	3 018.6	1 859.5	4 878.1	7.9	61.9
<b>1997</b>									
June	2 120.8	2 791.3	181.0	221.4	3 012.8	1 918.7	4 931.4	7.3	61.1
July	2 151.9	2 813.6	192.1	238.1	3 051.7	1 885.5	4 937.2	7.8	61.8
August	2 094.3	2 750.5	185.6	228.0	2 978.4	1 964.5	4 942.9	7.7	60.3
September	2 156.5	2 840.0	189.5	243.7	3 083.8	1 865.0	4 948.7	7.9	62.3
October	2 149.1	2 789.4	189.3	236.2	3 025.7	1 928.7	4 954.3	7.8	61.1
November	2 156.7	2 843.5	181.1	225.9	3 069.4	1 890.5	4 959.9	7.4	61.9
December	2 187.6	2 872.6	183.1	230.8	3 103.3	1 862.2	4 965.6	7.4	62.5
<b>1998</b>									
January	2 163.2	2 801.8	198.5	244.3	3 046.1	1 923.5	4 969.5	8.0	61.3
February	2 138.9	2 789.1	201.4	262.4	3 051.5	1 922.0	4 973.5	8.6	61.4
March	2 148.0	2 830.9	197.1	245.8	3 076.8	1 900.8	4 977.5	8.0	61.8
April	2 161.5	2 848.9	167.9	219.1	3 068.0	1 914.7	4 982.7	7.1	61.6
May	2 141.9	2 835.3	184.2	227.2	3 062.5	1 925.2	4 987.8	7.4	61.4
June	2 170.3	2 865.9	174.9	223.0	3 088.8	1 904.1	4 992.9	7.2	61.9
July	2 226.8	2 894.6	175.5	216.9	3 111.6	1 886.2	4 997.7	7.0	63.3
August	2 144.7	2 814.1	179.5	221.3	3 035.4	1 967.2	5 002.6	7.3	60.7

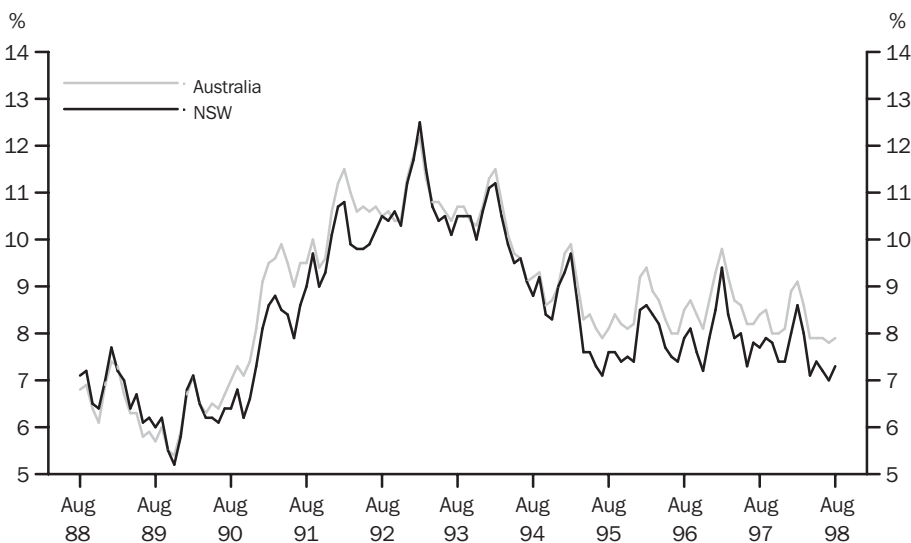
<sup>a</sup> The number of unemployed in each group expressed as a percentage of the labour force in the same group.

<sup>b</sup> The labour force in each group expressed as a percentage of the civilian population aged 15 and over in the same group.

Source: Labour Force, Australia, Preliminary (Cat. no. 6202.0)

# 5

## UNEMPLOYMENT RATE—ORIGINAL



Source: Labour Force, Australia, Preliminary (Cat. no. 6202.0).

## 6

## COAL, ELECTRICITY AND GAS PRODUCTION, NSW AND AUSTRALIA—ORIGINAL

Indicator	Unit	Latest period	New South Wales				Australia		
			Latest figure	Change from prior period		Latest figure	Change from prior period		
				%	Change from same period prior year		%	Change from same period prior year	
Raw coal won—									
Underground	'000 tonnes	June 98	4 842	4.2	2.6	6 267	6.0	10.2	
Open cut	'000 tonnes	June 98	6 811	16.4	17.7	14 774	4.0	7.6	
Total	'000 tonnes	June 98	11 653	11.0	11.0	21 041	4.5	8.4	
Electricity	mill. kWh	Jun qtr 98	15 561	8.1	-2.6	44 281	2.4	3.2	
Gas(a)	teraJ	Jun qtr 98	29 614	31.5	-1.0	174 491	23.7	1.9	

<sup>a</sup> Available for issue through mains. Includes ACT.

Source: Joint Coal Board, Manufacturing Production, Australia (Cat. no. 8301.0)

## 7

## COAL, ELECTRICITY AND GAS PRODUCTION, NSW—ORIGINAL

Period	Raw coal won			Electricity mill. kWh	Gas(a) teraJ
	Underground	Open cut	Total		
	'000 tonnes	'000 tonnes	'000 tonnes		
<b>1995-96</b>	54 314	58 775	113 089	62 047	104 141
<b>1996-97</b>	54 643	69 037	123 680	62 788	109 284
<b>1997-98</b>	58 249	75 049	133 298	61 804	111 665
<b>1997</b>					
April	4 804	6 625	11 429	} 15 973	} 29 907
May	5 183	6 626	11 809		
June	4 717	5 785	10 502		
July	6 491	7 085	13 576	} 16 632	} 34 086
August	5 124	6 112	11 236		
September	4 911	5 792	10 703		
October	4 498	6 716	11 214	} 15 220	} 25 445
November	4 252	6 084	10 336		
December	4 090	5 997	10 087		
<b>1998</b>					
January	5 361	6 322	11 683	} 14 390	} 22 521
February	4 560	5 748	10 308		
March	4 326	5 515	9 841		
April	5 146	7 016	12 162	} 15 561	} 29 614
May	r4 648	r5 851	r10 499		
June	4 842	6 811	11 653		

<sup>a</sup> Available for issue through mains. Includes ACT.

Source: Joint Coal Board, Manufacturing Production, Australia (Cat. no. 8301.0)

## 8

## BUILDING APPROVALS, NSW AND AUSTRALIA

Indicator	Unit	Latest period	New South Wales			Australia		
			Latest figure	Change from prior period %	Change from same period prior year %	Latest figure	Change from prior period %	Change from same period prior year %
Number of dwelling units(a) (seasonally adjusted)—								
New houses	No.	July 98	2 467	-2.5	15.6	8 894	-6.0	11.8
Total	No.	July 98	4 936	-7.9	33.4	13 280	-7.3	14.0
Value of new residential building (seasonally adjusted)	\$m	July 98	565.5	-4.0	32.4	1 345.5	-12.2	19.8
Value of alterations and additions to residential building(b) (seasonally adjusted)	\$m	July 98	142.3	2.3	49.3	267.2	-10.2	22.1
Value of non-residential building(c) (original)	\$m	July 98	329.8	-37.0	-43.6	881.4	-27.4	-46.4
Value of all building (original)	\$m	July 98	1 104.4	-9.1	-4.5	2 708.3	-10.4	-15.0

<sup>a</sup> Includes dwelling units approved as part of the construction of non-residential building and alterations and additions to existing buildings (including conversions to dwelling units).

<sup>b</sup> Valued at \$10,000 or more. Includes conversions of existing buildings into residential buildings.

<sup>c</sup> Valued at \$50,000 or more.

Source: *Building Approvals, Australia (Cat. no. 8731.0)*

## 9

## BUILDING APPROVALS, NSW

Period	Number of dwelling units(a), seasonally adjusted				Value of building approvals			
	New houses		Total		Seasonally adjusted		Original	
	Private sector	Total	Private sector	Total	New residential building	Alterations and additions to residential building(b)	Non-residential building(c)	All building
	no.	no.	no.	no.	\$m	\$m	\$m	\$m
<b>1995-96</b>	..	..	..	..	..	..	3 650.3	9 168.6
<b>1996-97</b>	..	..	..	..	..	..	5 169.2	11 356.6
<b>1997-98</b>	..	..	..	..	..	..	5 894.7	13 287.2
<b>1997</b>								
May	3 059	3 076	4 504	4 558	491.5	90.7	260.5	971.3
June	2 111	2 120	4 118	4 277	460.7	127.3	353.0	903.0
July	2 122	2 134	3 621	3 700	427.2	95.3	584.9	1 156.7
August	2 198	2 203	4 622	4 742	614.2	99.5	710.5	1 405.9
September	2 181	2 186	3 844	3 961	430.3	93.8	396.4	958.0
October	2 424	2 434	4 045	4 077	479.4	108.9	520.3	1 123.1
November	2 399	2 411	4 424	4 470	503.1	103.5	380.6	1 028.0
December	2 545	2 563	4 476	4 620	529.0	119.0	286.0	885.8
<b>1998</b>								
January	2 621	2 648	4 395	4 506	450.2	144.0	477.0	984.0
February	2 451	2 482	3 635	3 767	413.4	122.5	461.8	943.8
March	2 574	2 592	4 496	4 633	522.9	112.7	386.4	988.9
April	2 578	2 585	4 909	5 025	577.0	160.4	527.0	1 263.2
May	2 405	2 419	4 050	4 127	463.7	129.4	640.7	1 335.0
June	2 483	2 529	5 256	5 357	588.9	139.1	523.1	1 214.8
July	2 306	2 467	4 610	4 936	565.5	142.3	329.8	1 104.4

<sup>a</sup> Includes dwelling units approved as part of the construction of non-residential building and alterations and additions to existing buildings (including conversions to dwelling units).

<sup>b</sup> Valued at \$10,000 or more. Includes conversions of existing buildings into residential buildings.

<sup>c</sup> Valued at \$50,000 or more.

Source: *Building Approvals, Australia (Cat. no. 8731.0)*

## 10

## TURNOVER OF RETAIL ESTABLISHMENTS(a), NSW AND AUSTRALIA—SEASONALLY ADJUSTED

Indicator	Latest period	New South Wales			Australia		
		Latest figure	Change from prior period	Change from same period prior year	Latest figure	Change from prior period	Change from same period prior year
		\$m	%	%	\$m	%	%
Food retailing	July 98	1 514.5	-1.2	0.4	4 684.5	0.6	5.0
Department stores	July 98	395.7	26.7	14.1	1 119.8	17.7	11.2
Clothing and soft good retailing	July 98	281.4	3.5	1.7	790.3	5.0	11.8
Household good retailing	July 98	426.9	1.0	-3.0	1 239.6	-0.4	-3.0
Recreational good retailing	July 98	219.5	-2.2	1.4	645.6	1.9	4.6
Other retailing	July 98	406.0	-1.6	4.3	1 187.9	0.2	4.6
Hospitality and services	July 98	801.9	3.4	6.8	1 974.9	2.9	6.3
<b>Total value of retail sales</b>	<b>July 98</b>	<b>4 046.0</b>	<b>2.4</b>	<b>3.0</b>	<b>11 642.5</b>	<b>2.6</b>	<b>5.2</b>

<sup>a</sup> The figures shown are derived from a monthly survey of retail establishments. Excludes motor vehicle, boat and caravan dealers, service stations, smash repairers, tyre and battery retailers, bread and milk vendors, footwear repairers and electrical appliance repairers n.e.c. Retail establishments which do not have employees are excluded from the survey. Turnover includes retail sales, wholesale sales, takings from repairs, meals and hiring of goods; and commissions from agency activity (e.g. commissions received from collecting dry cleaning, selling lottery tickets etc.)

Source: Retail Trade, Australia (Cat. no. 8501.0).

## 11

## TURNOVER OF RETAIL ESTABLISHMENTS(a), NSW—SEASONALLY ADJUSTED

Period	Food retailing	Department stores	Clothing and soft good retailing	Household good retailing	Recreational good retailing	Other retailing	Hospitality and services	Total
	\$m	\$m	\$m	\$m	\$m	\$m	\$m	\$m
<b>1997</b>								
May	1 476.3	331.7	278.0	451.2	222.6	387.4	743.0	3 890.1
June	1 470.6	327.7	277.9	451.5	224.2	391.5	764.5	3 907.8
July	1 509.1	346.9	276.7	440.0	216.4	389.4	751.0	3 929.4
August	1 506.3	335.5	275.1	436.6	213.5	386.7	755.6	3 909.4
September	1 529.3	349.3	276.9	433.1	225.9	378.7	762.3	3 955.5
October	1 524.9	343.4	274.7	421.2	223.0	394.1	762.4	3 943.6
November	1 524.4	349.4	279.0	402.3	220.3	410.8	766.8	3 952.9
December	1 546.0	331.9	282.0	420.7	226.6	406.8	772.2	3 986.2
<b>1998</b>								
January	1 560.2	367.4	267.4	438.8	234.4	398.3	760.3	4 026.8
February	1 558.1	328.7	266.5	437.4	224.7	407.0	754.4	3 976.9
March	1 547.6	334.2	265.2	444.7	224.0	394.2	760.3	3 970.3
April	1 515.9	354.9	269.6	434.1	229.8	405.0	762.3	3 971.5
May	1 510.2	362.3	286.9	426.9	221.5	407.7	775.4	3 991.0
June	1 532.2	312.4	271.8	422.6	224.5	412.4	775.2	3 951.0
July	1 514.5	395.7	281.4	426.9	219.5	406.0	801.9	4 046.0

<sup>a</sup> The figures shown are derived from a monthly survey of retail establishments. Excludes motor vehicle, boat and caravan dealers, service stations, smash repairers, tyre and battery retailers, bread and milk vendors, footwear repairers and electrical appliance repairers n.e.c. Retail establishments which do not have employees are excluded from the survey. Turnover includes retail sales, wholesale sales, takings from repairs, meals and hiring of goods; and commissions from agency activity (e.g. commissions received from collecting dry cleaning, selling lottery tickets etc.)

Source: Retail Trade, Australia (Cat. no. 8501.0).

## 12

## NEW MOTOR VEHICLE REGISTRATIONS(a), NSW AND AUSTRALIA—SEASONALLY ADJUSTED

Indicator	Latest period	New South Wales			Australia		
		Latest figure	Change from prior period	Change from same period prior year	Latest figure	Change from prior period	Change from same period prior year
		no.	%	%	no.	%	%
Passenger vehicles	July 98	22 040	5.9	26.8	61 469	-4.1	21.9
Other vehicles (excluding motor cycles)	July 98	3 351	4.6	21.3	10 282	-7.2	13.1
Total registrations (excluding motor cycles)	July 98	25 391	5.7	26.1	71 752	-4.5	20.6

<sup>a</sup> Includes vehicles (other than those of the defence forces) owned by Government departments and authorities. Excludes mobile plant and equipment, tractors, trailers and non-motorised caravans.

Source: *New Motor Vehicle Registrations, Australia, Preliminary (Cat. no. 9301.0)*.

## 13

## NEW MOTOR VEHICLE REGISTRATIONS(a), NSW—SEASONALLY ADJUSTED

Period	Passenger vehicles	Other vehicles (excluding motor cycles)	Total (excluding motor cycles)
	no.	no.	no.
<b>1997</b>			
May	16 924	2 770	19 694
June	17 978	2 728	20 706
July	17 377	2 763	20 141
August	16 977	2 732	19 709
September	18 454	2 711	21 165
October	18 920	2 729	21 650
November	18 995	2 513	21 507
December	18 315	3 020	21 335
<b>1998</b>			
January	19 116	2 967	22 083
February	18 501	3 259	21 760
March	17 747	2 978	20 725
April	19 342	3 450	22 791
May	18 640	3 282	21 923
June	20 817	3 203	24 020
July	22 040	3 351	25 391

<sup>a</sup> Includes vehicles (other than those of the defence forces) owned by Government departments and authorities. Excludes mobile plant and equipment, tractors, trailers and non-motorised caravans.

Source: *New Motor Vehicle Registrations, Australia, Preliminary (Cat. no. 9301.0)*.

# 14

## ACCOMMODATION ESTABLISHMENTS(a) NSW AND AUSTRALIA—ORIGINAL

Indicator	Unit	Latest period	New South Wales				Australia		
			Latest figure	Change from	Change from	Latest figure	Change from	Change from	
				prior period	same period		prior period	same period	
			%	%		%	%		
Room nights	'000	June qtr 98	2 890.3	-4.2	2.8	8 724.6	-3.7	3.2	
Room occupancy rate	%	June qtr 98	56.3	-5.8	-2.1	54.6	-5.9	-2.0	
Takings	\$'000	June qtr 98	316 721	-7.7	4.4	881 085	-7.8	3.1	

<sup>a</sup> Licensed hotels with facilities, motels and guest houses and serviced apartments with 15 or more rooms or units.

Source: Tourist Accommodation, Australia (Cat. no. 8635.0)

# 15

## ACCOMMODATION ESTABLISHMENTS(a) SYDNEY AND NSW—ORIGINAL

Period	Sydney Tourism Region(b)			New South Wales		
	Room nights	Room occupancy rate	Takings	Room nights	Room occupancy rate	Takings
	'000	%	\$'000	'000	%	\$'000
<b>1997</b>						
March qtr	1 680.2	79.1	230 849	3 030.9	62.8	334 524
June qtr	1 515.1	70.5	209 163	2 810.3	57.5	303 313
September qtr	1 555.0	69.6	209 484	2 964.9	59.0	322 065
December qtr	1 653.5	73.0	235 244	3 081.0	60.8	343 650
<b>1998</b>						
March qtr	1 664.9	71.9	235 516	3 017.3	59.8	343 248
June qtr	1 568.3	66.3	216 500	2 890.3	56.3	316 721

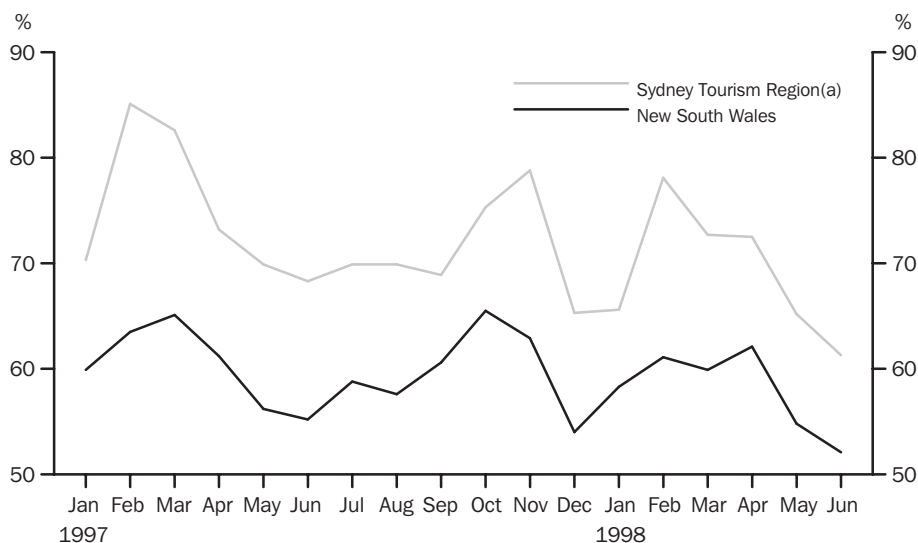
<sup>a</sup> Licensed hotels with facilities, motels and guest houses and serviced apartments with 15 or more rooms or units.

<sup>b</sup> Excludes Gosford, Wyong and Blue Mountains Statistical Local Areas.

Source: Tourist Accommodation, Small Area Data, NSW (Prod. no. 8635.1.40.001)

# 16

## ACCOMMODATION ESTABLISHMENTS MONTHLY ROOM OCCUPANCY RATE—ORIGINAL



(a) Excludes Gosford, Wyong and Blue Mountains Statistical Local Areas.

Source: Tourist Accommodation, Small Area Data, NSW (Prod. no. 8635.1.40.001)

# 17

## CONSUMER AND PRODUCER PRICE INDEXES, NSW AND AUSTRALIA

Indicator	Unit	Latest period	Latest figure	New South Wales		Australia(a)		
				Change from prior period %	Change from same period prior year %	Latest figure	Change from prior period %	Change from same period prior year %
Consumer Price Index (all groups)	1989-90 =100.0	Jun qtr 98	121.4	0.6	1.0	121.0	0.6	0.7
Price index of materials used in house building (all groups)	1989-90 =100.0	Jun qtr 98	120.7	-0.1	2.9	119.0	0.3	1.7
Price index of materials used in building other than house building (all groups)	1989-90 =100.0	Jun qtr 98	114.8	0.3	0.8	114.5	0.4	0.5

<sup>a</sup> For the Consumer Price Index this is the weighted average of eight capital cities and for the other two indexes, the weighted average of the six State capital cities.

Source: Consumer Price Index (Cat. no. 6401.0), Price Index of Materials Used in Building Other Than House Building, Six State Capital Cities (Cat. no. 6407.0), Price Index of Materials Used in House Building, Six State Capital Cities (Cat. no. 6408.0)

# 18

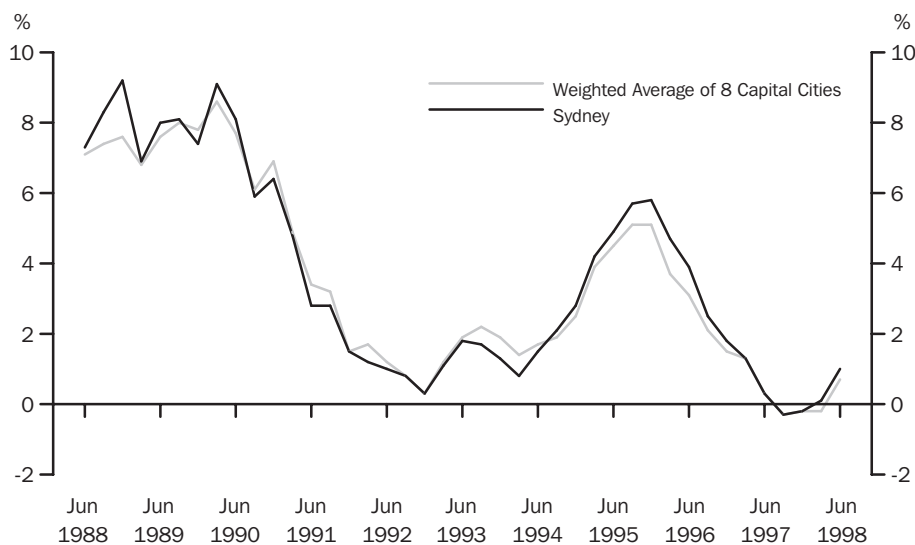
## CONSUMER AND PRODUCER PRICE INDEXES, NSW

Period	Consumer Price Index, all groups	Price Index of materials used in house building, all groups	Price Index of materials used in building other than house building, all groups
	1989-90 = 100.0	1989-90 = 100.0	1989-90 = 100.0
<b>1997</b>			
March qtr	120.6	116.0	113.2
June qtr	120.2	117.3	113.9
September qtr	119.8	117.8	114.2
December qtr	120.1	119.4	114.2
<b>1998</b>			
March qtr	120.7	120.8	114.4
June qtr	121.4	120.7	114.8

Source: Consumer Price Index (Cat. no. 6401.0), Price index of Materials Used in Building Other Than House Building, Six State Capital Cities (Cat. no. 6407.0), Price Index of Materials Used in House Building, Six State Capital Cities (Cat. no. 6408.0).

# 19

## CONSUMER PRICE INDEX, ANNUAL RATE OF CHANGE



Source: Consumer Price Index (Cat. no. 6401.0)

Indicator	Latest period	New South Wales			Australia		
		Latest figure \$m	Change from prior period %	Change from same period prior year %	Latest figure \$m	Change from prior period %	Change from same period prior year %
Lending commitments for the construction or purchase of dwellings—							
Construction of dwellings	Jul 98	264	0.6	19.6	782	-6.1	12.9
Purchase of newly erected dwellings	Jul 98	123	6.3	5.5	260	1.3	1.0
Purchase of established dwellings(a)	Jul 98	1 283	-5.8	5.3	3 025	-4.5	7.9
Refinancing of existing dwellings	Jul 98	375	4.1	16.5	881	-2.8	2.3
Lending commitments for alterations and additions	Jul 98	98	-3.2	5.1	221	-9.4	0.9
Total lending commitments to individuals for housing(b)	Jul 98	2 045	-2.6	8.9	4 947	-4.2	7.2
Total lending commitments to individuals for housing (seasonally adjusted)(b)	Jul 98	1 838	-9.2	7.6	4 560	-8.9	6.9

<sup>a</sup> Excludes refinancing.

<sup>b</sup> Excludes alterations and additions.

Source: *Housing Finance for Owner Occupation, Australia (Cat. no. 5609.0)* Note: From this issue all values will be reported in whole millions of dollars.

## 21

## SECURED HOUSING FINANCE COMMITMENTS TO INDIVIDUALS FOR OWNER OCCUPATION, NSW

Period	Lending commitments for the construction or purchase of dwellings				Lending commitments for alterations and additions \$m	Total lending commitments to individuals for housing(b)	
	Construction of dwellings \$m	Purchase of newly erected dwellings \$m	Purchase of established dwellings(a) \$m	Refinancing of existing dwellings \$m		Original \$m	Seasonally adjusted \$m
<b>1995-96</b>	r1 895	r898	10 145	r2 930	r1 262	15 868	..
<b>1996-97</b>	r2 117	r1 234	r12 566	r4 062	r1 221	19 979	..
<b>1997-98</b>	2 625	r1 280	r14 446	r3 574	r1 173	r21 925	..
<b>1997</b>							
May	221	121	1 282	316	100	1 941	1 779
June	193	121	1 123	327	90	1 764	1 736
July	221	117	1 218	322	93	1 878	1 708
August	214	115	1 155	311	90	1 794	1 824
September	236	116	1 211	322	103	1 885	1 856
October	224	111	1 254	302	110	1 891	1 884
November	201	110	1 198	262	98	1 771	1 805
December	204	112	1 137	247	91	1 700	1 789
<b>1998</b>							
January	169	73	919	238	81	1 398	1 928
February	216	98	1 137	298	105	1 750	1 790
March	239	111	1 285	r314	107	r1 955	r1 728
April	223	r107	r1 305	r285	95	r1 920	r1 919
May	216	r95	r1 261	r312	99	r1 885	r1 775
June	262	r116	r1 362	r360	r101	r2 100	r2 025
July	264	123	1 283	375	98	2 045	1 838

<sup>a</sup> Excludes refinancing.

<sup>b</sup> Excludes alterations and additions.

Source: *Housing Finance for Owner Occupation, Australia (Cat. no. 5609.0)*.



<i>Item</i>	<i>Actual 1995-96</i>	<i>Actual 1996-97</i>	<i>Estimates 1997-98</i>	<i>Actual 1997-98</i>
	<i>\$m</i>	<i>\$m</i>	<i>\$m</i>	<i>\$m</i>
<b>RECEIPTS</b>				
Current receipts				
Taxes, fees and fines				
Stamp duties	2 630	3 193	3 373	3 700
Payroll tax	2 876	3 153	3 338	3 393
Land tax	575	641	786	862
Motor vehicle tax	937	904	930	948
Gaming and betting	1 179	1 209	1 392	1 338
Licences	1 729	1 754	1 979	145
Commonwealth Safety Net Taxes	—	—	—	1 662
Other	943	1 086	1 114	918
Land transactions and royalties	246	243	238	244
Income from Non Budget Sector Enterprises	1 290	1 481	1 341	1 500
Commonwealth General Purpose Recurrent Grants less—State Fiscal Contribution	4 517	4 673	4 900	4 808
Commonwealth Specific Purpose Recurrent Grants	2 757	3 025	2 962	3 039
Other	729	566	626	559
<i>Total current receipts</i>	20 408	21 718	22 763	22 899
Capital receipts				
Commonwealth General Purpose Capital Grants	—	—	—	—
Commonwealth Specific Purpose Capital Grants	867	832	854	724
Other	11	254	228	226
<i>Total capital receipts</i>	877	1 086	1 081	950
<b>Total current and capital receipts</b>	<b>21 285</b>	<b>22 804</b>	<b>23 844</b>	<b>23 849</b>
<b>EXPENDITURE</b>				
Current expenditure				
Departmental payments				
Services				
Health	5 116	5 394	5 585	5 743
Education(a)	4 641	4 912	5 174	5 032
Law and order(b)	1 247	1 672	1 711	1 762
Community Services	989	1 085	1 155	1 178
Other	3 944	4 116	4 192	4 460
Redundancies	17	27	38	52
Subsidies to Non Budget agencies				
Services	726	1 038	866	896
Redundancies	66	32	63	87
Interest payments	1 683	1 377	1 527	1 497
Superannuation	1 077	1 444	1 451	1 495
Treasurer's advance(c)	—	—	100	—
less—User charges	1 286	1 277	1 347	1 370
<i>Total current expenditure</i>	18 220	19 820	20 516	20 830
Capital expenditure				
Capital works	1 940	2 613	2 665	2 506
Capital grants	1 483	1 001	1 240	1 075
less—Asset sales	160	269	202	275
<i>Total capital expenditure</i>	3 263	3 345	3 703	3 305
<b>Total current and capital expenditure</b>	<b>19 669</b>	<b>23 165</b>	<b>24 219</b>	<b>24 135</b>
<b>SURPLUS OR DEFICIT (-)</b>				
Current account	2 188	1 898	2 246	2 068
Capital account	-2 386	-2 259	-2 622	-2 355
<i>Total result surplus/deficit</i>	-198	-362	-376	-287
Add Advances made/repaid (net)	1 812	607	320	191
Total result surplus/deficit (original budget est. basis)	1 617	245	-56	-96

<sup>a</sup> Includes Department of Training and Education Co-ordination, Department of School Education, Office of the Board of Studies and TAFE.

<sup>b</sup> Includes Attorney Generals Department, Department of Corrective Services and Police Services.

<sup>c</sup> Expenditure from the Treasurer's Advance is included in the relevant current payments figures.

Source: Financial Statement released by NSW Treasury. Figures may differ from data published in annual ABS publications.

# 23

## ACTUAL PRIVATE NEW FIXED CAPITAL EXPENDITURE, CURRENT PRICES—NSW AND AUSTRALIA, TREND

Indicator	Latest period	New South Wales			Australia		
		Latest figure	Change from prior period	Change from same period prior year	Latest figure	Change from prior period	Change from same period prior year
		\$m	%	%	\$m	%	%
Type of asset—							
New buildings and structures	June qtr	881	-9.2	-15.5	3 332	2.6	-3.9
Equipment, plant and machinery	June qtr	2 543	-2.9	7.4	8 355	-0.6	8.7
<b>Total</b>	<b>June qtr</b>	<b>3 424</b>	<b>-4.6</b>	<b>0.4</b>	<b>11 687</b>	<b>0.2</b>	<b>4.8</b>

Source: State Estimates of Private New Capital Expenditure (Cat. no. 5646.0)

# 24

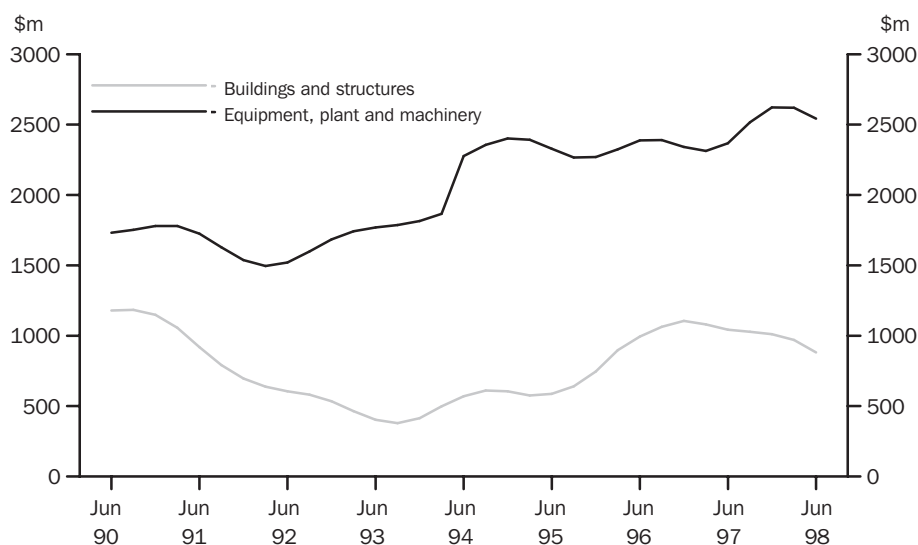
## ACTUAL PRIVATE NEW FIXED CAPITAL EXPENDITURE, CURRENT PRICES—NSW, TREND

Period	Type of asset		Total
	New buildings and structures	Equipment, plant and machinery	
	\$m	\$m	\$m
<b>1997</b>			
March qtr r	1 080	2 313	3 393
June qtr r	1 043	2 368	3 412
September qtr r	1 028	2 517	3 545
December qtr r	1 011	2 623	3 634
<b>1998</b>			
March qtr r	970	2 620	3 590
June qtr	881	2 543	3 424

Source: State Estimates of New Capital Expenditure (Cat. no. 5646.0)

# 25

## ACTUAL PRIVATE NEW FIXED CAPITAL EXPENDITURE, CURRENT PRICES—NSW, TREND



Source: State Estimates of New Capital Expenditure (Cat. no. 5646.0)

Indicator	Latest period	New South Wales			Australia		
		Latest figure	Change from prior period	Change from same period prior year	Latest figure	Change from prior period	Change from same period prior year
		\$m	%	%	\$m	%	%
Overseas imports into NSW	Jul 98	3 772	5.3	17.1	8 915	5.4	20.3
Total overseas exports(b)	Jul 98	1 601	-2.5	-9.0	7 119	-2.2	4.5
Exports of—							
Meat and meat preparations	Jul 98	79	-0.2	6.2	336	-1.8	14.0
Cereals and cereal preparations	Jul 98	96	11.1	-34.8	320	-25.0	-5.7
Wool and other animal hair	Jul 98	64	30.3	-37.8	217	8.1	-41.6
Coke, coal and briquettes	Jul 98	344	-5.9	2.7	833	-3.1	11.0
Iron and steel	Jul 98	112	-5.4	71.4	171	0.7	55.9
Aluminium	Jul 98	106	-15.5	9.1	320	17.1	33.0
Office machines and parts	Jul 98	41	-4.7	-9.9	65	-13.8	-13.8

<sup>a</sup> Figures shown are Free On Board (FOB) values.

<sup>b</sup> Excludes re-exported goods. State of origin is defined as the State in which the final stage of production or manufacture occurs.

Source: *International Trade, Australia: FASTTRACCS Service (Cat. no. 5466.0)*.

Period	Overseas exports of selected commodities(b)								
	Overseas imports into NSW	Total overseas exports(b)	Meat and meat preparations	Cereals and cereal preparations	Wool and other animal hair	Coke, coal and briquettes	Iron and steel	Aluminium	Office machines and parts
	\$m	\$m	\$m	\$m	\$m	\$m	\$m	\$m	\$m
<b>1995-96</b>	34 891	16 684	794	822	720	3 338	1 037	1 111	638
<b>1996-97</b>	34 204	r17 730	784	1 540	859	3 426	968	993	535
<b>1997-98</b>	r38 437	r19 671	r922	r1 551	r1 062	4 048	1 168	1 226	522
<b>1997</b>									
May	2 788	r1 717	75	197	74	289	112	99	40
June	3 182	1 557	68	204	61	270	57	73	41
July	3 221	r1 760	74	146	104	335	65	97	45
August	3 002	r1 760	71	186	79	318	93	116	44
September	3 217	r1 669	76	159	102	351	59	73	48
October	3 387	r1 693	78	95	120	302	123	98	45
November	3 096	1 761	89	149	130	328	98	102	51
December	3 419	r1 839	88	165	116	384	89	99	59
<b>1998</b>									
January	2 942	1 436	65	135	72	359	115	118	37
February	r2 803	r1 459	75	115	82	322	87	82	38
March	3 437	r1 502	82	119	73	301	99	107	38
April	3 064	r1 480	64	r100	66	337	104	100	37
May	3 267	r1 670	r82	96	67	346	118	109	38
June	r3 582	r1 642	r79	86	49	366	118	125	r43
July	3 772	1 601	79	96	64	344	112	106	41

<sup>a</sup> Figures shown are Free On Board (FOB) values.

<sup>b</sup> Excludes re-exported goods. State of origin is defined as the State in which the final stage of production or manufacture occurs.

Source: *International Trade, Australia: FASTTRACCS Service (Cat. no. 5466.0)*.

## SELF-HELP ACCESS TO STATISTICS

*PHONE* Call 1900 986 400 for the latest statistics on CPI, Labour Force, Earnings, National Accounts, Balance of Payments and other topics. (Call cost is 75c per minute)

*INTERNET* <http://www.abs.gov.au>

*LIBRARY* A range of ABS publications is available from public and tertiary libraries Australia wide. Contact your nearest library to determine whether it has the ABS statistics you require.

## WHY NOT SUBSCRIBE?

*PHONE* +61 1300 366 323

*FAX* +61 3 9615 7848

## CONTACTING THE ABS

ABS provides a range of services, including: a telephone inquiry service; information consultancy tailored to your needs; survey, sample and questionnaire design; survey evaluation and methodological reviews; and statistical training.

<i>INQUIRIES</i>	<i>By phone</i>	<i>By fax</i>
Canberra	02 6252 6627	02 6253 1404
Sydney	02 9268 4611	02 9268 4668
Melbourne	03 9615 7755	03 9615 7798
Brisbane	07 3222 6351	07 3222 8283
Perth	08 9360 5140	08 9360 5955
Adelaide	08 8237 7400	08 8237 7566
Hobart	03 6222 5800	03 6222 5995
Darwin	08 8943 2111	08 8981 1218

*POST* Client Services, ABS, PO Box 10, Belconnen, ACT 2616

*EMAIL* [client.services@abs.gov.au](mailto:client.services@abs.gov.au)



2130710010988

ISSN 1031-8534

RRP \$16.00